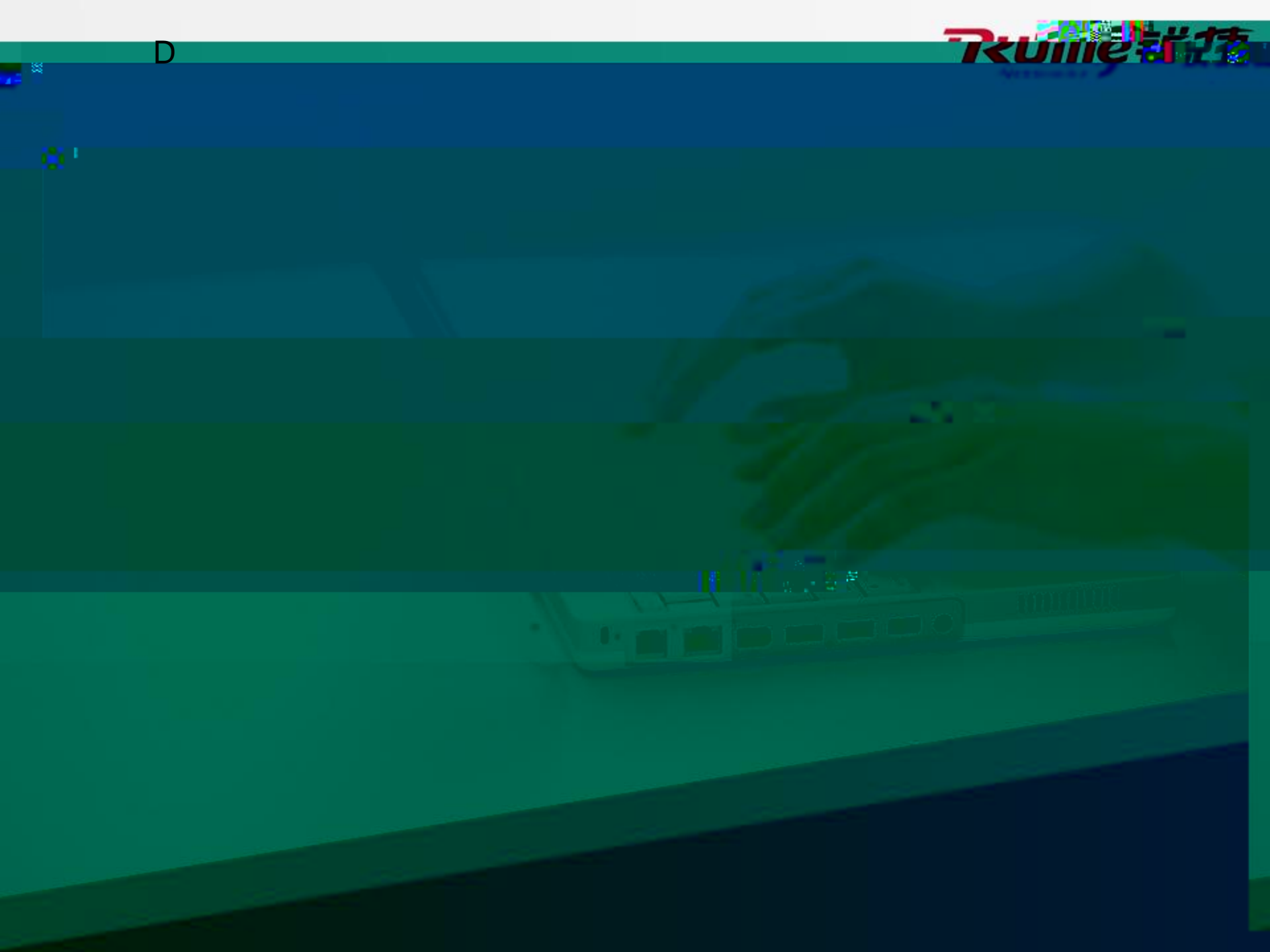


D







RG-AP730-L

10cm

■ 吸顶安装

架拧入并固定。

图 3-1 挂架吸顶安装



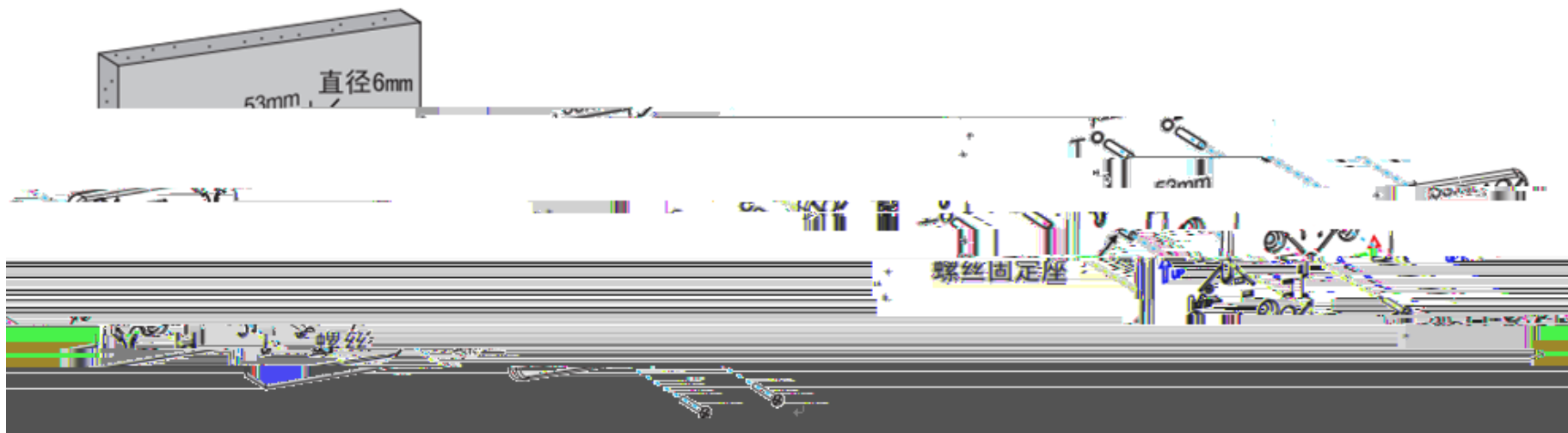


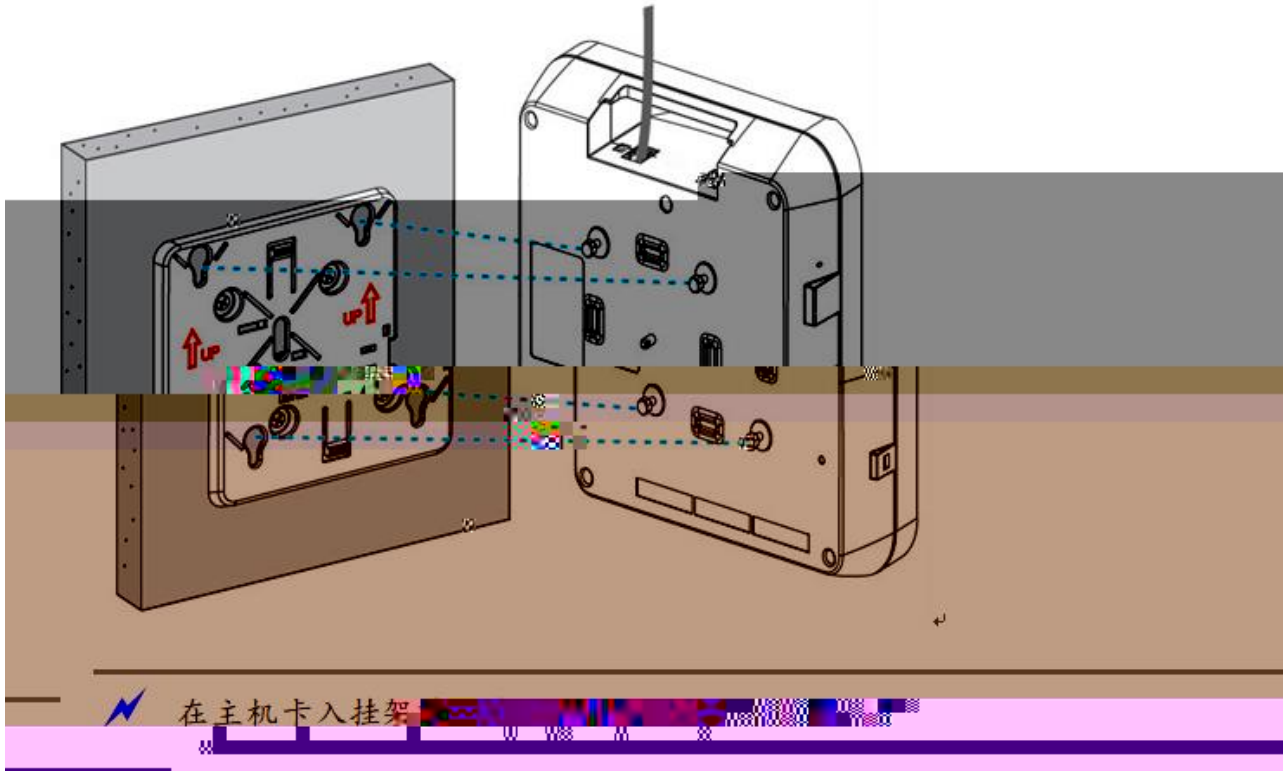


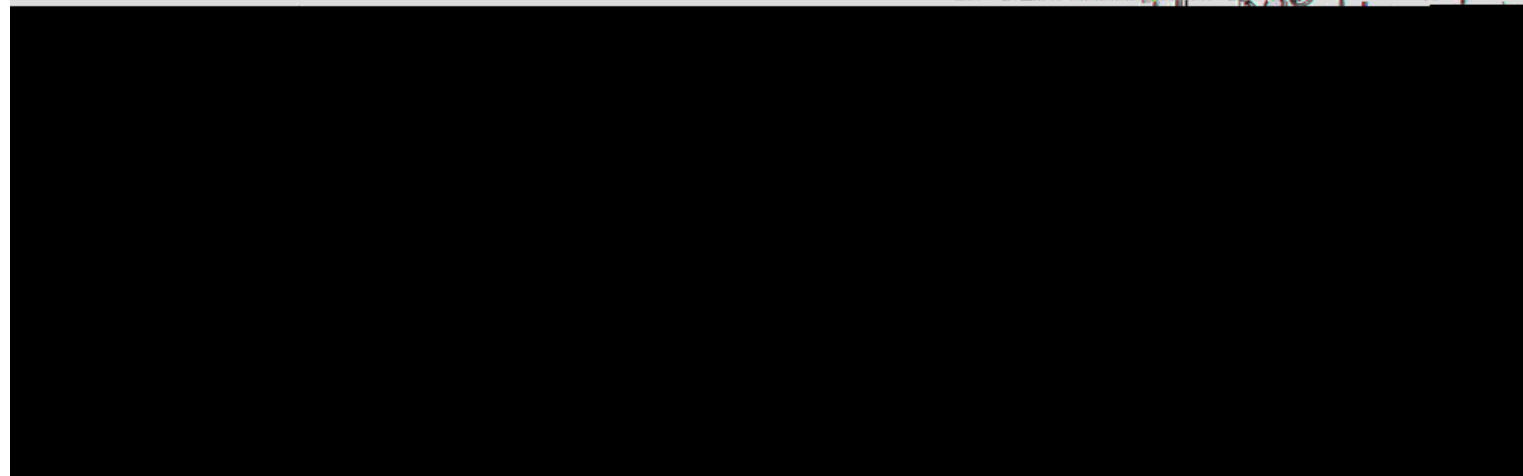


- 1) 在墙壁上钻 4 个直径 6mm 的安装孔，安装孔的中心距离为 53mm，挂架上的箭头方向朝上，在安装孔中敲入螺丝固定座后，用螺丝将挂架拧入并固定。

图 2-4 挂架壁挂安装

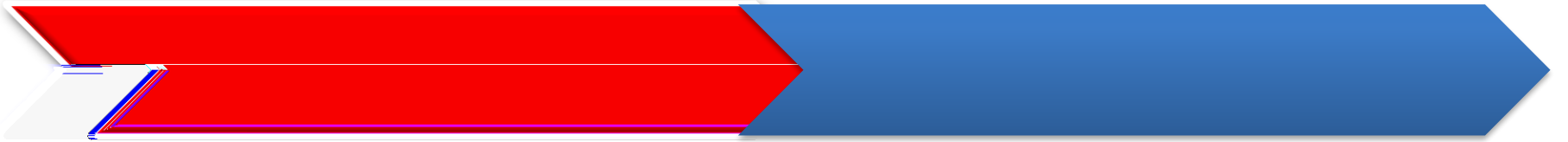












Console

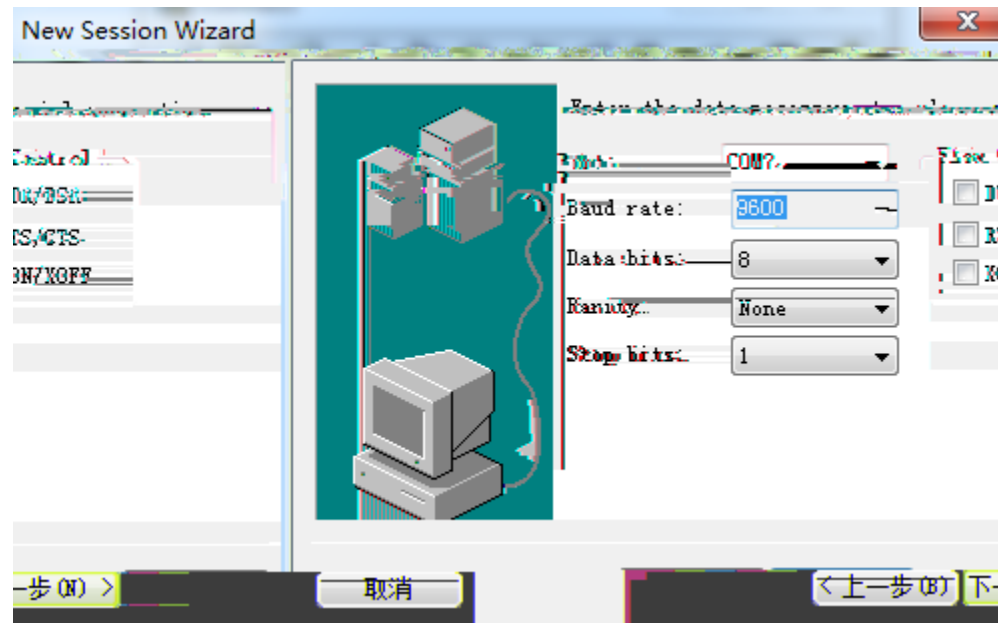
CRT

9600/115200

8

1

CRT





telnet

Enab

IP



Ruijie(config

Ruijie(config 0 4

Ruijie(config line)v 18(pass)-4(w)9(or)3(d)-6(x)5(x)5(x)]TETEM /San AVID 21/Lang (en-E



Enable

```
Ruijie(config)# enable password xxx
```

```
( ):
```

```
Ruijie(config-if)# description xxx
```



IP

```
Ruijie(config)# interface gigabitethernet xxx
```

```
Ruijie(config-if)# no switchport
```

```
Ruijie(config-if)# ip address 192.168.1.1 255.255.255.0
```

```
Ruijie(config-if)# no shutdown
```

```
Ruijie(config-if)# end
```

```
:
```

```
Ruijie(config)# ip route 192.168.1.0 255.255.255.0 10.1.1.1
```

```
192.168.1.0
```

```
10.1.1.1
```