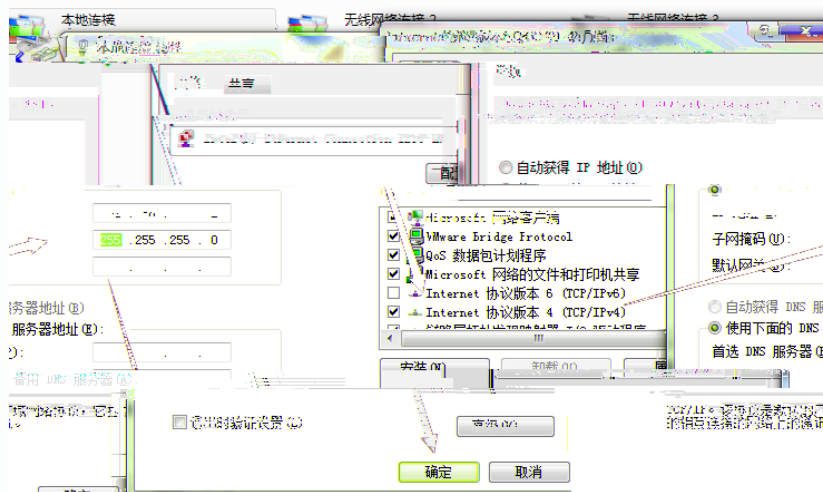






<http://192.168.1.1>
(admin)

WEB



1 组网模式



2 配置向导

保持不变

登录密码，默认未开启

配置为600

保存配置

跳转到首

Web端口: 80

(范围为: 80, 1025-65535, 默认: 80)

WEB登录端口, 建议

Telnet密码: sdhah

(密码由字母、数字、下划线和横线组成)

用于telnet

192.168.1.1 上的网页显示:

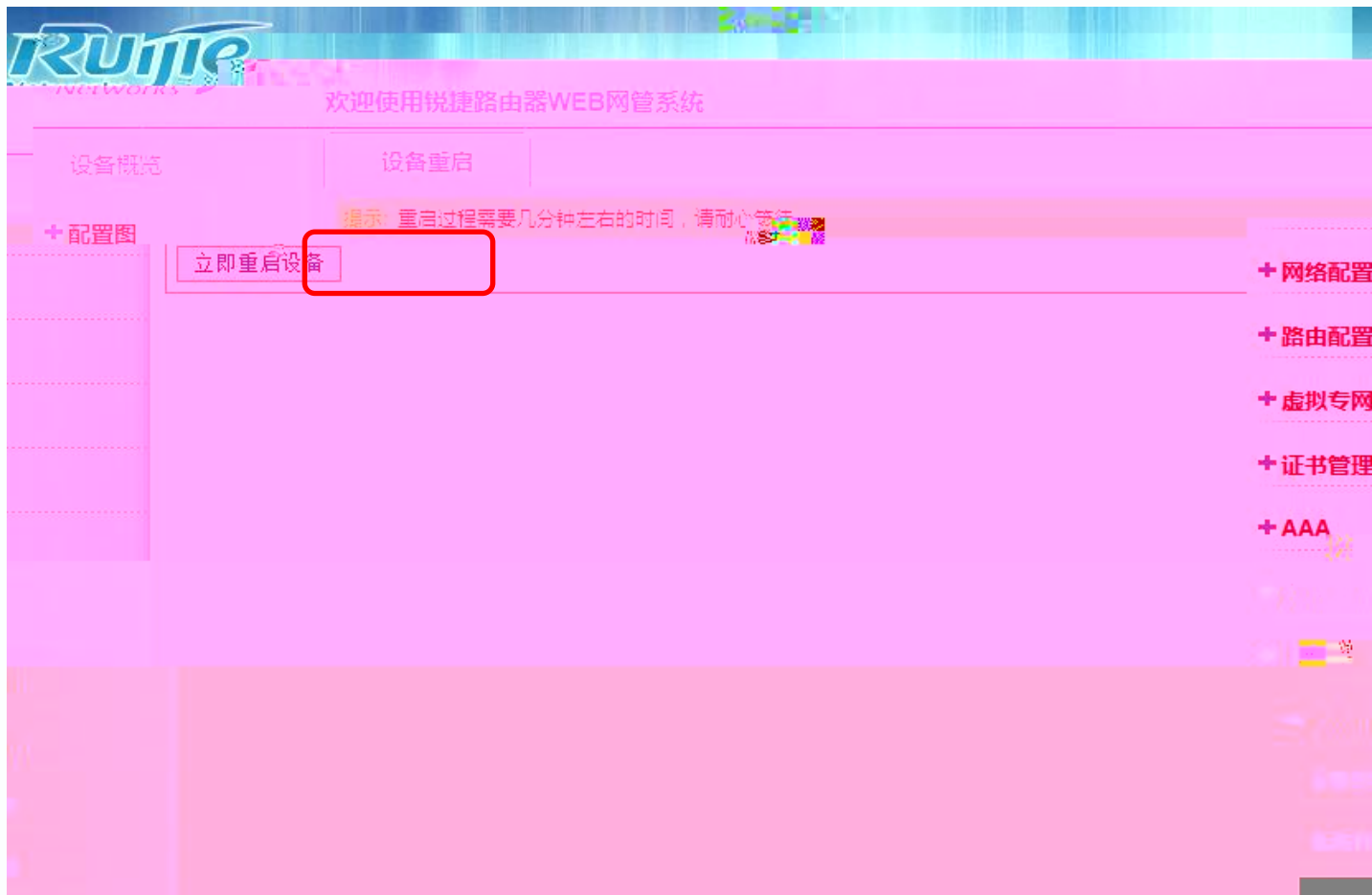
保存成功!

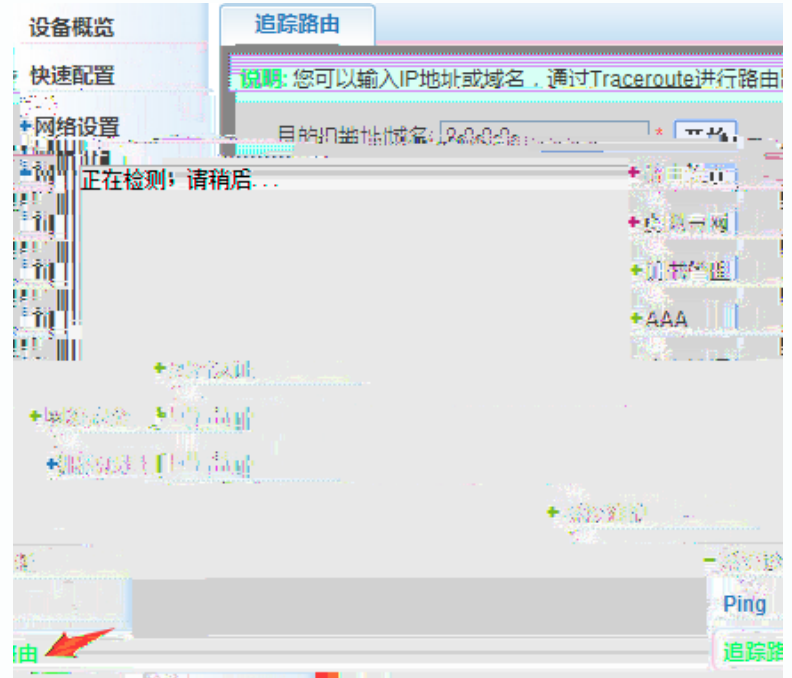
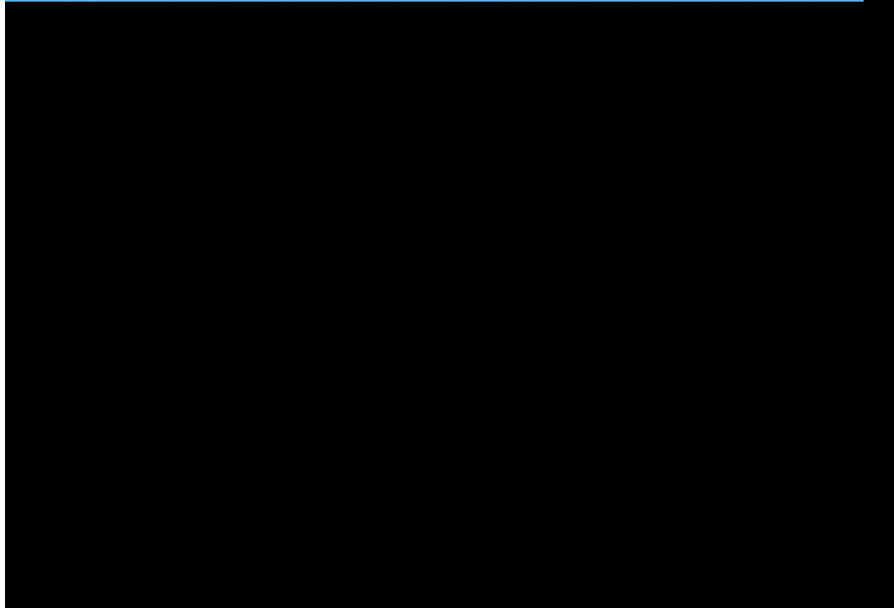
确定

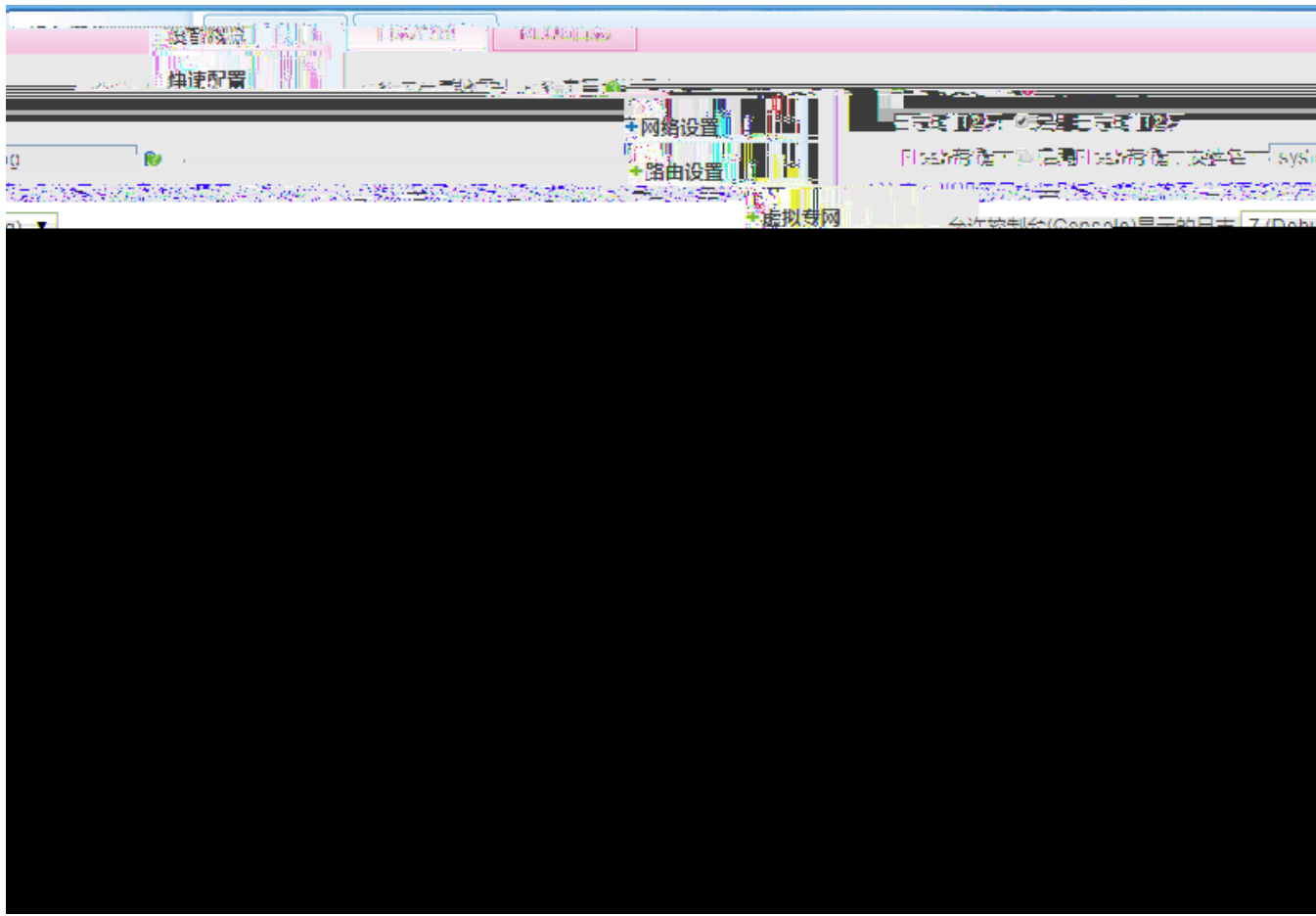
参数分别是 接口IP、掩码、网关地址、DNS地址、接口号、描述

配置DHCP服务 (对应物理接口为: GE1/0/GE1/23) 配置内网接口信息

接口	IP地址	掩码	网关地址	DNS地址	接口号	描述
GE1/0/23	192.168.1.1	255.255.255.0	*			
GE1/0/24	192.168.1.1	255.255.255.0	*			







I

Riite

www.riite.com



Riite

www.riite.com

```
Ruijie#show interfaces gigabitEthernet 0/0
Index(dec):2 (hex):2
GigabitEthernet 0/0 is UP , line protocol is UP
Hardware is OCTEN GE CONTROLLER GigabitEthernet, address is 001a.a93d.b84f (bia 001a.a93d.b84f)
Interface address is: no ip address
ARP type: ARPA, ARP Timeout: 3600 seconds
  MTU 1500 bytes, BW 1000000 Kbit
  Encapsulation protocol is Ethernet-II, loopback not set
  Keepalive interval is 10 sec, set
  Carrier delay is 2 sec
  Rxload is 1/255, Txload is 1/255
  Queuing strategy: FIFO
    Output queue 0/40, 0 drops;
    Input queue 0/75, 0 drops
  Link Mode: 1000M/Full-Duplex, media-type is twisted-pair.
  Output flowcontrol is off;Input flowcontrol is off.
  5 minutes input rate 496 bits/sec, 0 packets/sec
  5 minutes output rate 13 bits/sec, 0 packets/sec
  431 packets input, 40593 bytes, 0 no buffer, 0 dropped
  Received 429 broadcasts, 0 runts, 0 giants
  0 input errors, 0 CRC, 0 frame, 0 overrun, 0 abort
  0 packets output, 40593 bytes, 0 no buffer, 0 dropped
```



将日志



累
本次开机运行

后面的

的





Riite

www.riite.com



Riite

www.riite.com







Riite

www.riite.com



Riite

www.riite.com

1

Riite

www.riite.com

The screenshot displays a network management interface with a sidebar on the left containing navigation options: 快速配置, +网络设置, +路由设置, +虚拟专网, +证书管理, +AAA, and 网络拓扑. The main content area is divided into several sections:

- 注意事项:** A yellow box containing instructions: 1. 可升级系统固件 (*.bin), 文件上传完成后, 必须重启设备才能生效。 2. 可升级WFR包 (*.wfr), 文件上传完成后, 按OTDR+ENTER刷新。
- 版本信息:** A grey box showing: 硬件版本: 1.00, 软件版本: RGOS 40.4(2h35) 9p0acc(200320) (各维升级包), and a link to the upgrade package.
- 软件升级:** A section with a progress bar showing 0% completion. Below the bar, it states: 升级进度: 0%, 状态信息: 升级文件为: rgos.bin.
- 设备名称:** A field for the device name.
- 系统时间:** A field for the system time.
- 开始安装:** A button with a blue arrow pointing right.
- 远程管理:** A button with a blue arrow pointing left.
- 软件升级:** A button at the bottom right.



Riite

www.riite.com

1

Riite

www.riite.com



Riite

www.riite.com

