

SATA
POWER



copyright © 2021



<http://www.ruijie.com.cn/>

<http://webchat.ruijie.com.cn>

<http://www.ruijie.com.cn/service.aspx>

7× 24

4008-111-000

<http://www.ruijie.com.cn/service/know.aspx>

1

RG-DDI

RG-DDI

1.1 RG-DDI1000

| | |
|-----------|---|
| | RG-DDI1000 |
| | DDR3 SDRAM 2GB |
| | BOOTROM 8MB |
| | FLASH 512MB |
| | SATA 500G |
| I/O | 8 10/100/1000M 0/0, 0/1, 0/2, 0/3, 0/4 0/5 0/6, 0/7 0/6, 0/7 1000BASE-SX/LX/ZX |
| | mini GBIC GE-SFP-LX20/LH40-BIDI |
| | 1 |
| | 1 |
| | USB 2 |
| | 1 |
| | 10Base-T/100Base-TX/1000Base-TX 1000BASE-SX/LX/ZX |
| | RS-232 |
| x x mm | 440x43.6x200 |
| | 100-240V~ 50-60Hz |
| | 40W |
| | -5° ~50 |
| | 10~90%RH |

U

USB

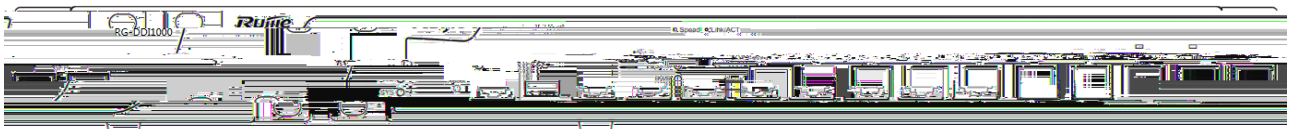
U

U

FAT32

RG-DDI1000

1-1 RG-DDI1000



1-2 RG-DDI1000



| | | | |
|-------|----------|------|------|
| | | | |
| PWR | | | |
| SYS | | | |
| SATA | | | |
| 0-7 | Link/ACT | / / | Link |
| 0-7 | speed | / | |
| 6F-7F | | Link | |

1.2 RG-DDI2000

| | |
|-----|--|
| | RG-DDI2000 |
| I/O | DDR3 SDRAM 16GB |
| | BOOTROM 8MB |
| | FLASH 512MB |
| | SATA 500GB |
| | 8 10/100/1000M 1000BASE-SX/LX/ZX mini GBIC |

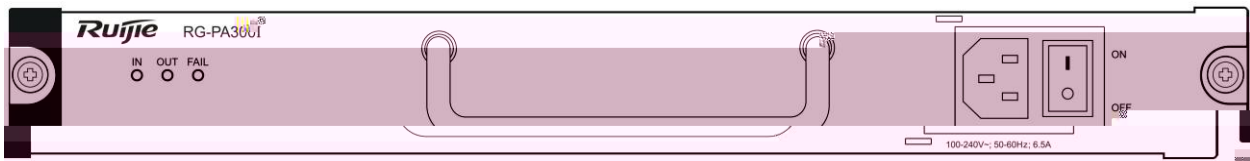
| | |
|---|---|
| | 10Base-T/100Base-TX/1000Base-TX 1000BASE-SX/LX/ZX |
| | RS-232 |
| <p style="text-align: center;">× × mm</p> | 440×88.1×560 |
| | 100-240V~ 50-60Hz |

| | |
|------------------|--|
| | |
| OBS0 OBS1 BYPASS | |

1.4

1.4.1 RG-PA300I

1-7 RG-PA300I



RG-PA300I

RG-DDI2000, RG-DDI3000

| | |
|------|--|
| | |
| IN | |
| OUT | |
| FAIL | |

| | |
|-----|--------------------------|
| | |
| | 100-240V~ 50-60Hz 6.5A |
| | 12V 1 25A 12VFAN 0 5A |
| | 300W |
| N+1 | |
| | |
| | |
| | -5 50 ±2 |

2

2.1

UPS

10

2

2.2.1 /

" "

| | | | |
|--------|-------|---------|---------|
| | | | |
| 15 ~30 | 0 ~45 | 40%~65% | 10%~90% |
| | | 1.5m | 0.4m |
| | 48 | 15 | |
| | | | 5 |

2.2.2

| | | | | |
|--|---------------------|-------------------|---------------------|---------------------|
| | 0.5 | 1 | 3 | 5 |
| | 1.4×10 ⁷ | 7×10 ⁵ | 2.4×10 ⁵ | 1.3×10 ⁵ |

| | | |
|--|-------------------|-------------------|
| | mg/m ³ | mg/m ³ |
|--|-------------------|-------------------|

Ä

2.2.4

2.2.5

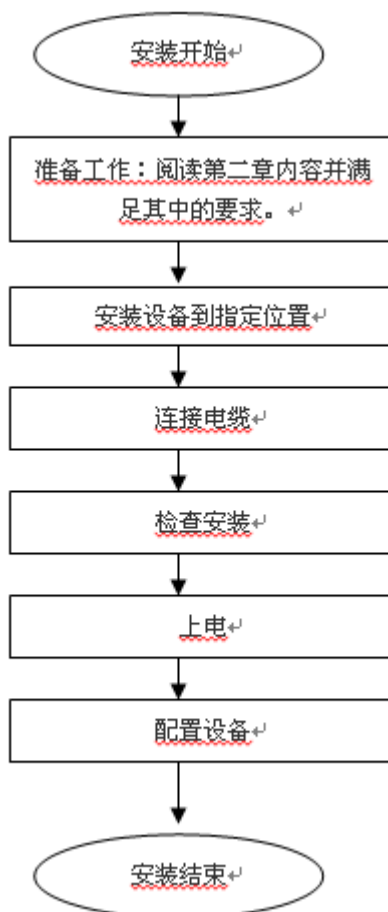
19"

2.3

| | |
|--|--------|
| | |
| | |
| | HUB PC |

3

3.1



3.2

10cm

3.3

RG-DDI

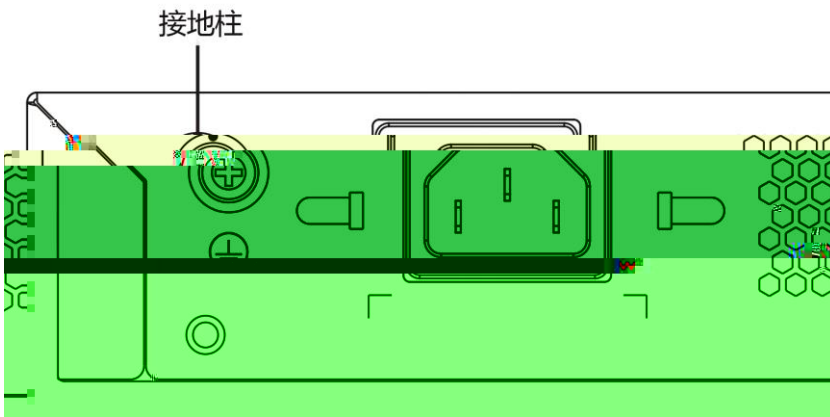
100-240V~/50-60Hz

3.4

RG-DDI

1

3-1 RG-DDI



3.5

RG-DDI

EIA/TIA-232

Console

WEB

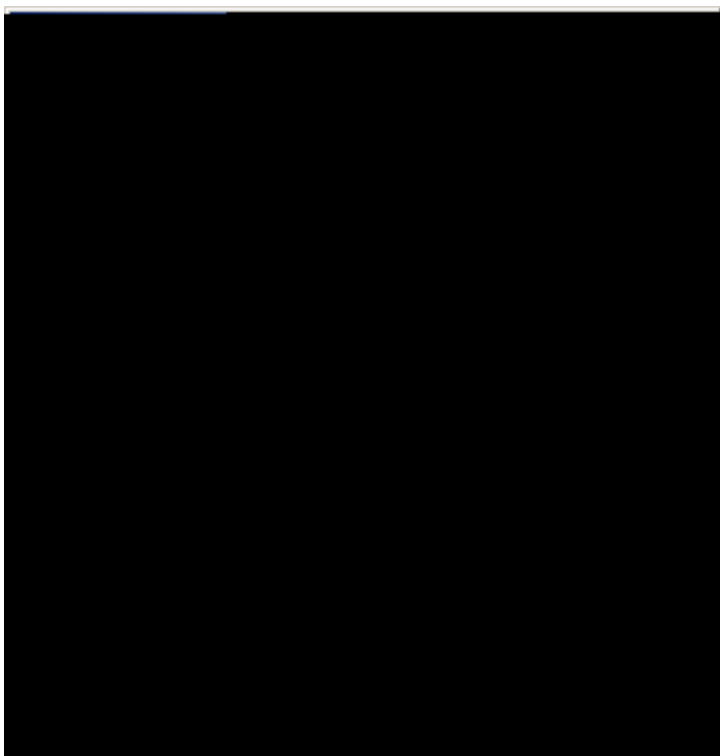
| | | | |
|--|-------------|----------|-----------|
| | | | |
| | RJ-45 | | |
| | EIA/TIA-232 | | |
| | 9600bps | 57600bps | 115200bps |
| | 1. | | |
| | 2. | | |

| | |
|--|----|
| | 3. |
|--|----|

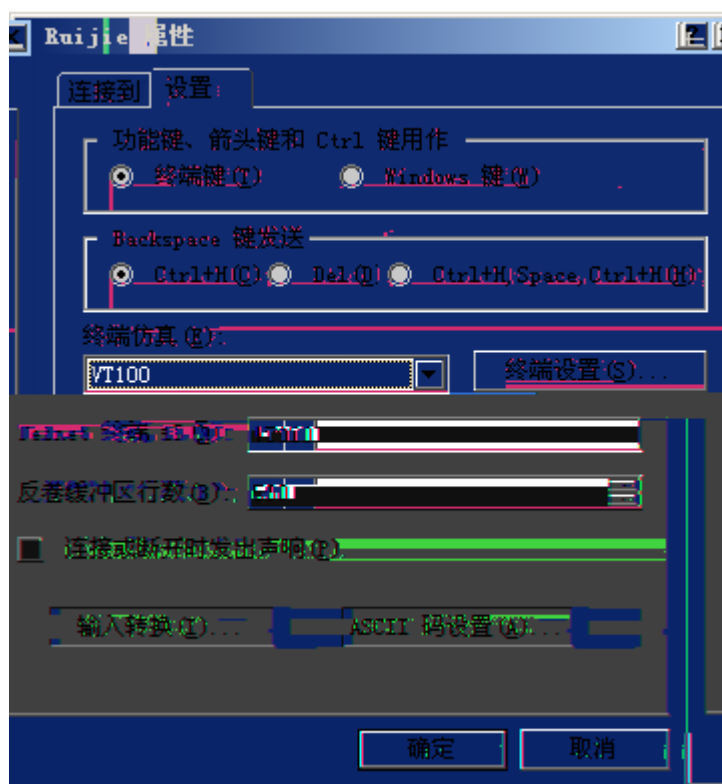
DB-9

3.6

4-3



4-4



4.2

" ON"

" "

*

*

```
00:00:00:00: %MTD_DRIVER-5-MTD_NAND_FOUND: 1 NAND chips(chip size : 33554432) detected
00:00:00:00: %MTD_DRIVER-5-MTD_NAND_FOUND: 1 nand chip(s) found on the target.
00:00:00:17: %LINK-5-CHANGED: Interface FastEthernet 0/1, changed state to up
00:00:00:17: %LINEPROTO-5-UPDOWN: Line protocol on Interface FastEthernet 0/1, changed state to up
00:00:00:17: %LINK-5-CHANGED: Interface FastEthernet 0/0, changed state to up
00:00:00:17: %LINEPROTO-5-UPDOWN: Line protocol on Interface FastEthernet 0/0, changed state to up
00:00:00:31: %SYS-5-COLDSTART: System coldstart.
Ruijie>
```

4.3

5

5.1

RG-DDI1000 RG-DDI2000 RG-DDI3000

PWR

PWR

5.2