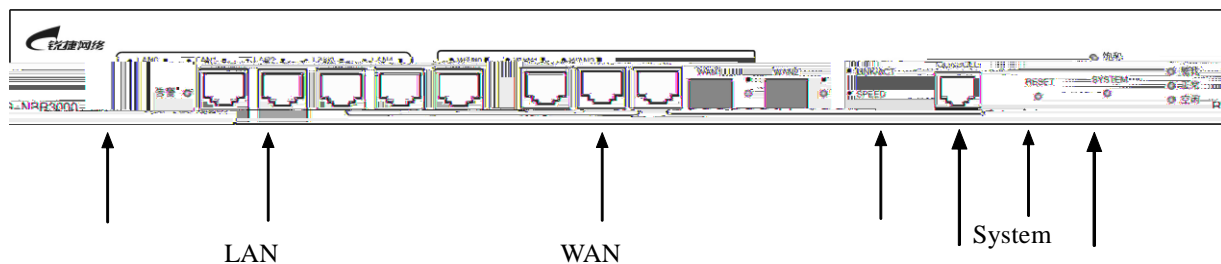


RG-NBR3000

1.	NBR	2
1.1	NBR3000	2
2.		4
3.		8
3.1		8
3.2		8
3.3		8
4.		9
4.1	IP	9
4.2	PPPoE	13
4.3	DHCP IP	16
5.	Web	21
5.1	Web	21
5.2		22
6.	NBR	29
6.1	NBR	29
6.1.1	WAN	29
6.1.2	LAN	29
6.1.3		29
6.2		30
6.2.1		30
6.2.2		31

1. NBR

1.1 NBR3000



1-8 RG-NBR3000

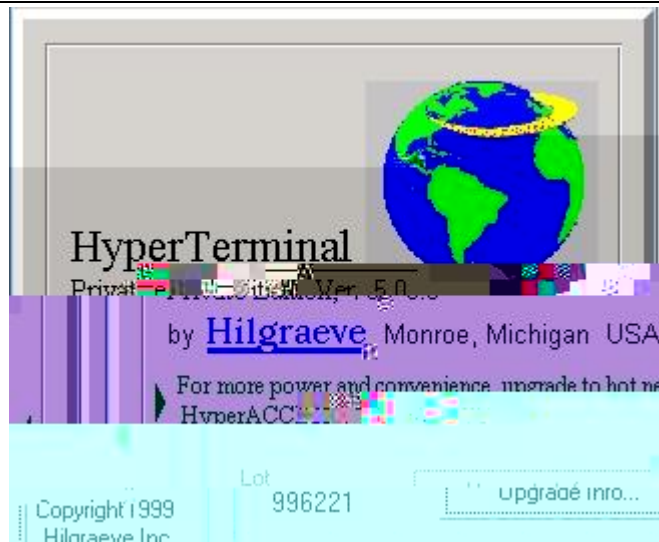
NBR3000

NBR3000

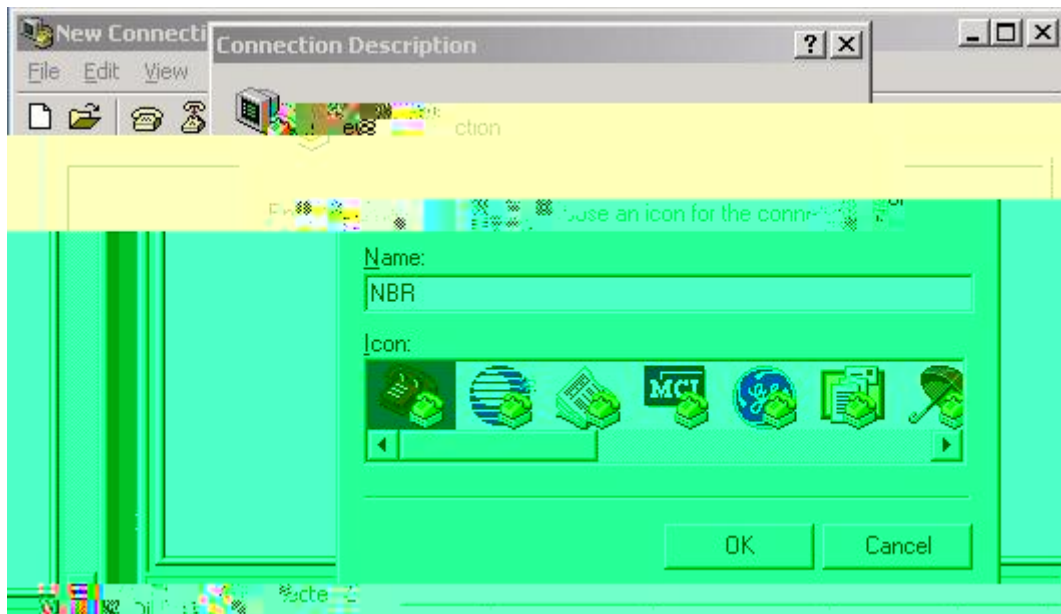
NBR

	30W
--	-----





2-3



2-4

3.

3.1

-
-



A

3.2

3.3

-
-
-
-

	NBR80	NBR2000
" Status"	NBR2500/NBR3000	" SYSTEM"
	NBR1100E/NBR1200/NBR1200G/NBR1100G	" "
	Console	

4.

WEB

Console

enable

enable

```
NBR>  
NBR>enable  
Password:  
NBR# setup
```

<=

<=

setup

NBR

setup

NBR **RGOS**

CD-ROM

RGOS

www.ruijie.com.cn

NBR **setup**


```

1.
2.
3.
    (1 - 3)[3]:
        [yes]:
WAN    ping    [no]:
        IP      [no]:

        DNS     (DNS   ) [no]:

        :
        :
        :admin
telnet          :remoteuser
        :
WAN 0:   IP
        : 218.5.19.2 255.255.255.0
        :218.5.19.1
NAT      :
        : 100 Mbps
        :
        : 192.168.0.1 255.255.255.0
        ARP: 1 Seconds
        :
        : LAN0          : LAN3
        :
        :
        :
WAN    ping    :
        DNS     (DNS   ):
        [yes]:

LAN    IP          telnet LAN    IP          !

!
.
NBR1#show running-config
Building configuration...
Current configuration : 1962 bytes

!
version 9.17 (building 9) for NBR
enable password 7 073f07221c1c
!
access-list 3198 deny tcp any any eq 135
access-list 3198 deny tcp any any eq 445
access-list 3198 permit ip any any
access-list 3199 deny icmp any any echo
access-list 3199 deny tcp any any eq 135
access-list 3199 deny tcp any any eq 445
access-list 3199 permit ip any any
access-list 99 permit any
dialer-list 1 protocol ip permit
mirror master lan 0 slave lan 3 all
!
!
!
service sequence-numbers

```

```
service timestamps debug datetime
service timestamps log datetime
no service password-encryption
!
interface FastEthernet 0/0
 ip nat inside
 ip access-group 3198 in
 no ip redirects
 no ip mask-reply
 no ip proxy-arp
 ip address 192.168.0.1 255.255.255.0
 arp gratuitous-send interval 1 5
!
interface FastEthernet 1/0
 ip nat outside
 ip access-group 3199 in
 no ip redirects
 no ip mask-reply
 no ip proxy-arp
 ip address 218.5.19.2 255.255.255.0
 duplex auto
 speed auto
!
interface FastEthernet 1/1
 duplex auto
 speed auto
 shutdown
!
interface Null 0
!
ip nat pool nbr_setup_build_pool prefix-length 24
 address 218.5.19.2 218.5.19.2 match interface FastEthernet 1/0
!
ip nat inside source list 99 pool nbr_setup_build_pool
ip nat translation max-entries 7000
ip nat translation per-user 0.0.0.0 1000
ip nat translation udp-timeout 150
ip nat translation icmp-timeout 30
ip nat translation tcp-timeout 600
ip nat translation finrst-timeout 20
ip nat translation dns-timeout 30
security anti-wan-attack level high
security anti-lan-attack
!
ip route 0.0.0.0 0.0.0.0 FastEthernet 1/0 218.5.19.1
!
line con 0
line vty 0
 login
 password 7 110022081d5e0834012e3e
line vty 1
 login
 password 7 072c06221a062210014f1f
line vty 2
 login
 password 7 093d101f2811175f1e2400
line vty 3
 login
 password 7 050a03330c3b1007340000
line vty 4
 login
 password 7 08112a181d330007590833
```

!
!
end

4.2 PPPoE

ADSL

Internet

```

:
1. IP
2. PPPoE
3. DHCP IP
   (1 - 3)[1]:
   PPPoE      :
   PPPoE      :pppoepassword
   ISP        Mbps (1-100)[ 100]:

:          telnet                LAN IP
                                LAN

LAN IP[192.168.0.1]:
LAN      [255.255.255.0]:
        ARP[yes]:
                (1 - 3600)[1]:
1          (1 -100)[5]:
        [no]:          NBR

        [yes]:
        [yes]:

:
1.
2.
3.
   (1 - 3)[3]:
   [yes]:
WAN ping [no]:
   IP      [no]:

   DNS     (DNS   ) [no]:

:
:
:
telnet      :
:
WAN 0:
:
:
: 100 Mbps
:
: 192.168.0.1 255.255.255.0
   ARP: 1 Seconds
:
:
:
WAN ping :
   DNS   (DNS   ):
   [yes]:

```

!
NBR#show running-config


```

!
interface Null 0
!
!
ip nat pool nbr_setup_build_pool prefix-length 24
address interface dialer 0 match interface dialer 0
!
ip nat inside source list 99 pool nbr_setup_build_pool
ip nat translation max-entries 7000
ip nat translation per-user 0.0.0.0 1000
ip nat translation udp-timeout 150
ip nat translation icmp-timeout 30
ip nat translation tcp-timeout 600
ip nat translation finrst-timeout 20
ip nat translation dns-timeout 30
security anti-wan-attack level high
security anti-lan-attack
!
ip route 0.0.0.0 0.0.0.0 dialer 0
!
line con 0
line vty 0
  login
  password 7 04220b032c
line vty 1
  login
  password 7 1000012217
line vty 2
  login
  password 7 08163c1000
line vty 3
  login
  password 7 072b102a07
line vty 4
  login
  password 7 050d153b11
  !
  !
end

```

```

          PC
NBR  WAN  LAN

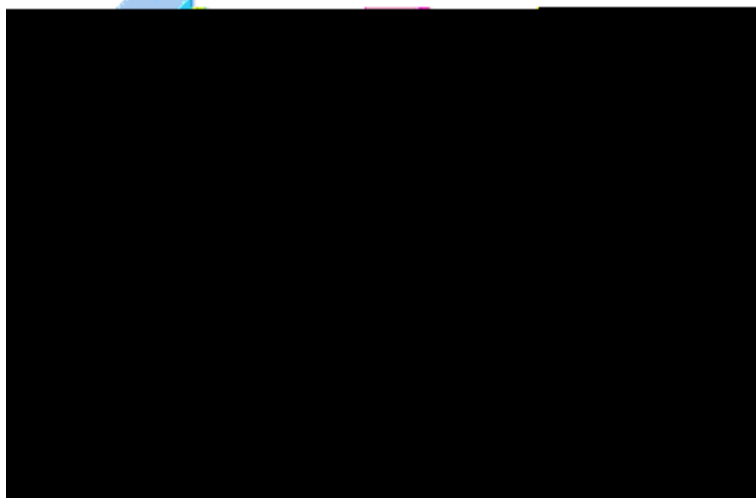
```

4.3 DHCP IP

```

          Internet
WAN      WAN      DHCP      IP      LAN
192.168.0.1      Internet      LAN  WAN      NAT

```



4-3 DHCP IP
 NBR (NBR1200
)

NBR >enable
 !
 NBR#setup

```

-----
ctrl-c          '[']

:
[NBR]:
telnet
WAN (1- ,2 - ,3- , ) [1]:

internet WAN :
0. WAN 0
1. WAN 1
   (0 - 1)[0]:

:
1. IP
2. PPPoE
3. DHCP IP
   (1 - 3)[1]:3
ISP      Mbps (1-100)[ 100]:
      ARP[no]:

: telnet          LAN IP
          LAN
LAN IP[192.168.0.1]:
LAN      [255.255.255.0]:
      ARP[yes]:
          (1 - 3600)[1]:
    
```

1

(1 -100)[5]:

[no]: NBR

[yes]:

[yes]:

:

~~14-11 10-1 4-1~~

```
access-list 99 permit any
dialer-list 1 protocol ip permit
!
service sequence-numbers
service timestamps debug datetime
service timestamps log datetime
no service password-encryption
!
interface FastEthernet 0/0
 ip nat inside
 ip access-group 3198 in
 no ip redirects
 no ip mask-reply
 no ip proxy-arp
 ip address 192.168.0.1 255.255.255.0
 arp gratuitous-send interval 1 5
!
interface FastEthernet 1/0
 ip nat outside
 ip access-group 3199 in
 no ip redirects
 no ip mask-reply
 no ip proxy-arp
 ip address dhcp
 duplex auto
 speed auto
!
interface FastEthernet 1/1
 duplex auto
 speed auto
 shutdown
!
interface Null 0
!
!
ip nat pool nbr_setup_build_pool prefix-length 24
 address interface FastEthernet 1/0 match interface FastEthernet 1/0
!
```

```
security anti-wan-attack level high
security anti-lan-attack
!
!
line con 0
line vty 0
  login
  password 7 131717470235173e3f0057
line vty 1
  login
  password 7 04251d0b31172a00012217
line vty 2
  login
  password 7 0132464e380c032b102a07
line vty 3
  login
  password 7 08112a181d330007590833
line vty 4
  login
  password 7 03513215092a063a061735
!
!
end
```

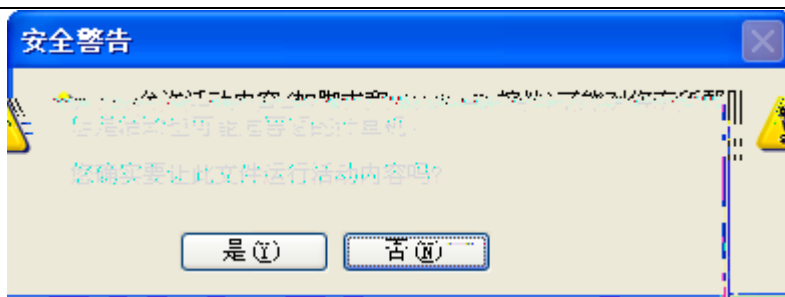
5. Web

Web

CD-ROM

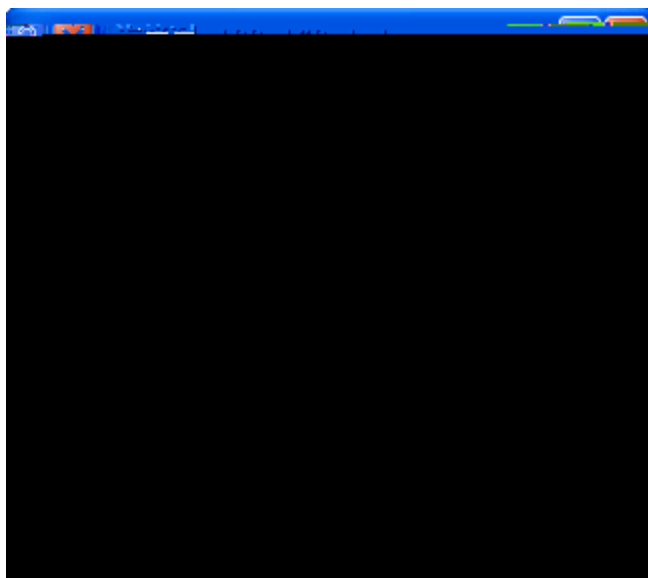
5.1 Web

LAN WAN IP



5-2 " (Y)"

" WEB " " WEB
 admin



5-3

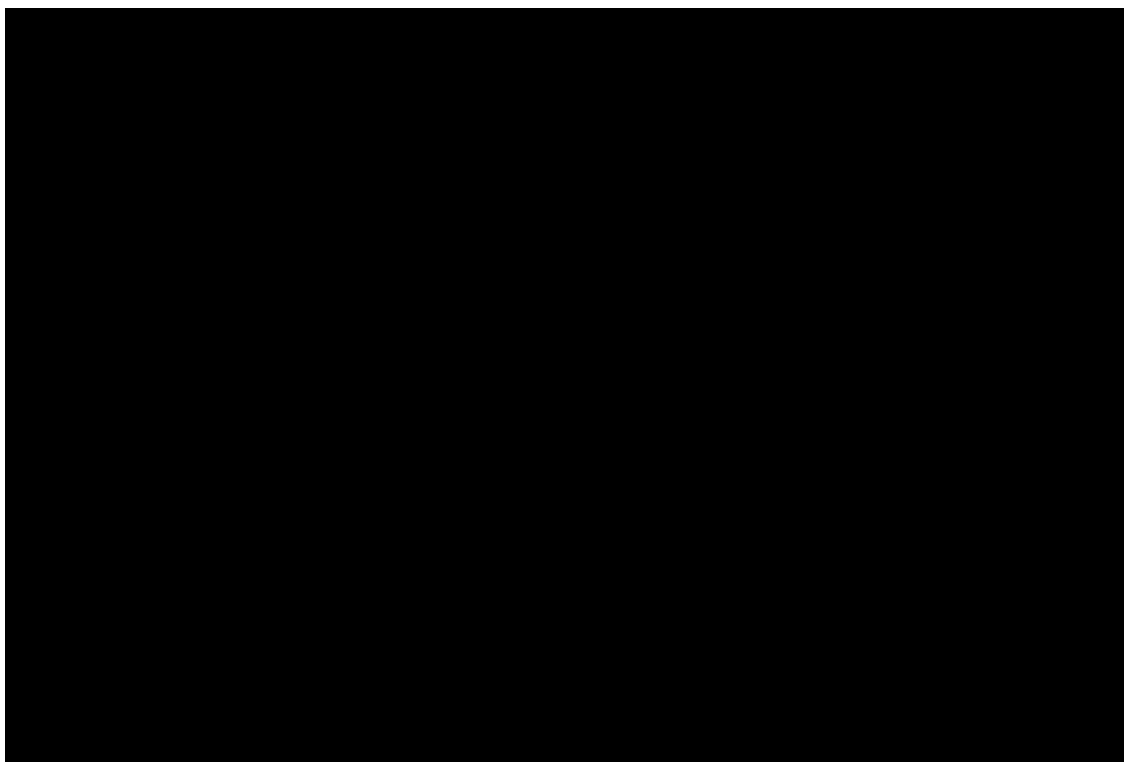
web flash web htm js

" " " WED "

Web

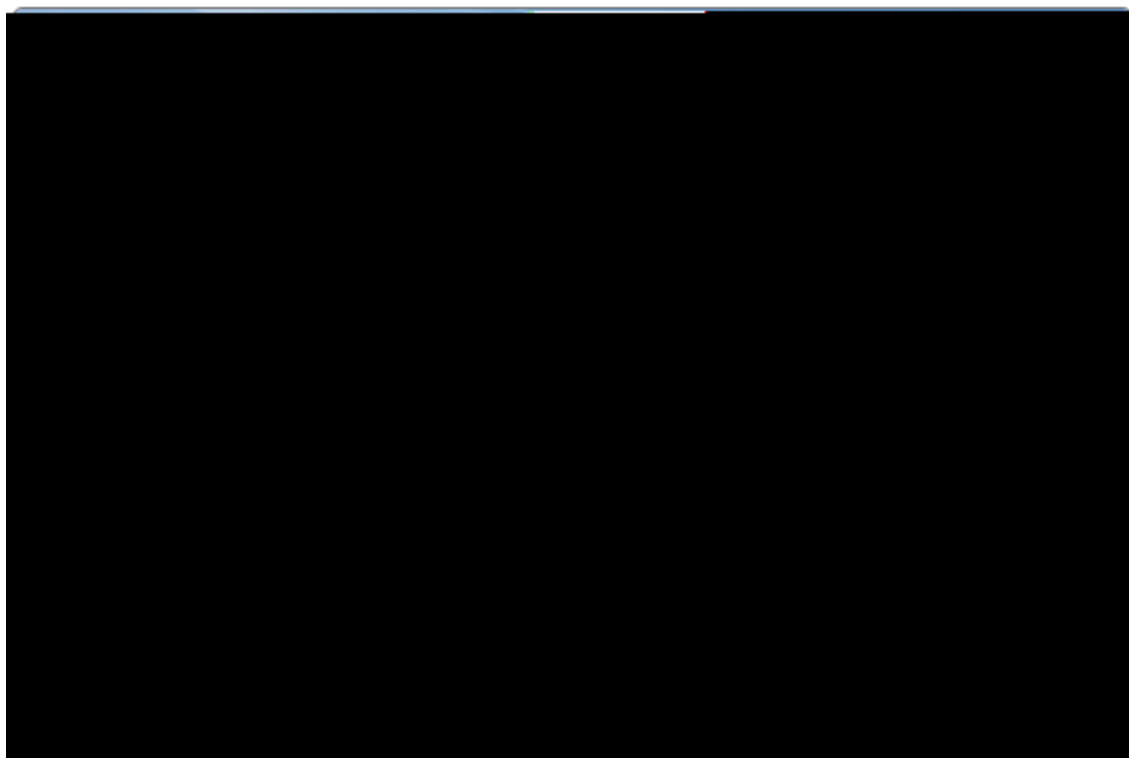
5.2

NBR
 NBR



5-4

" " LAN



5-5 LAN

LAN IP " " WAN IP Web
LAN IP



5-7 WAN0 IP

" PPPoE"



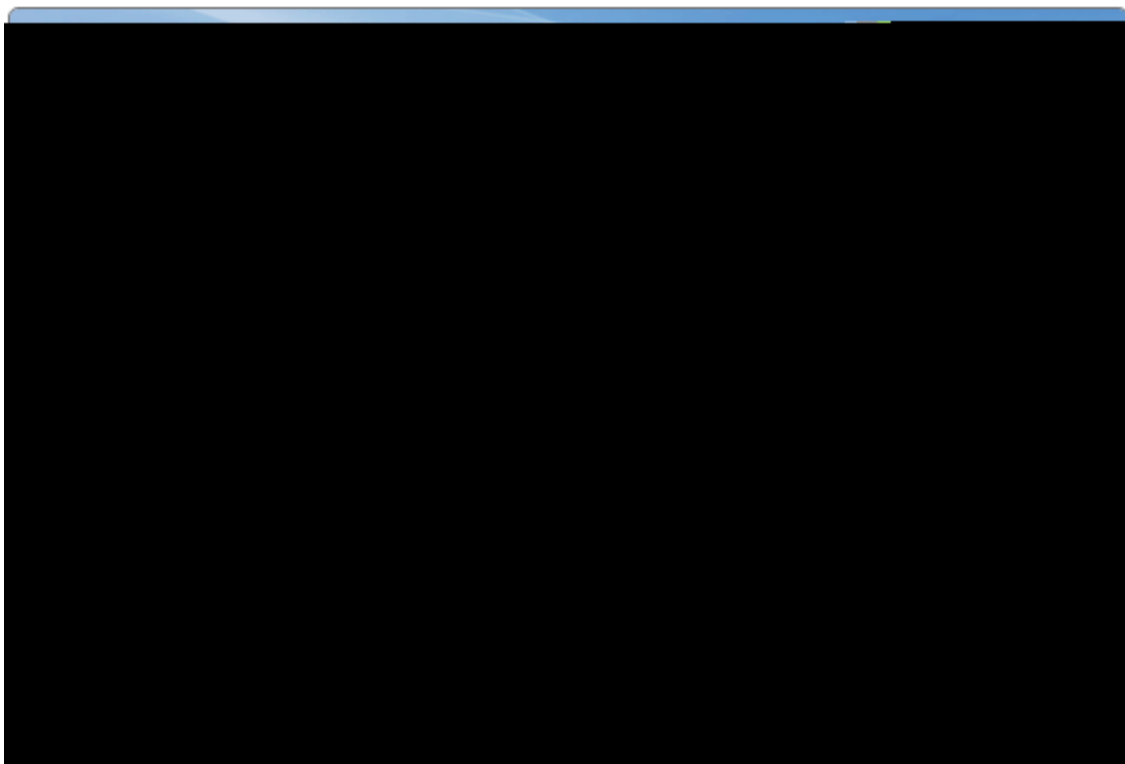
5-8

ADSL

1-1000M

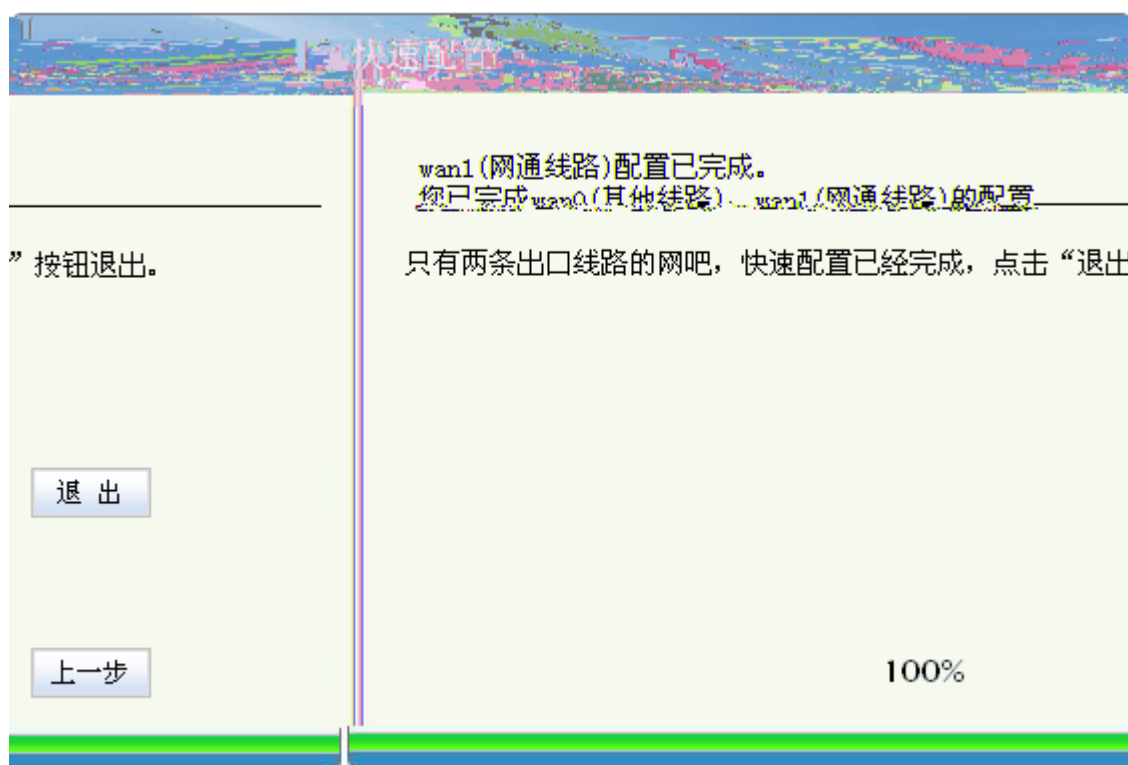
WAN0

WAN0



5-9 WAN0 PPPoE

WAN0				WAN1	"		(wan1)"
	"	"	"	"			
	LAN	IP				IP	Web
	WAN		WAN1			WAN	WAN

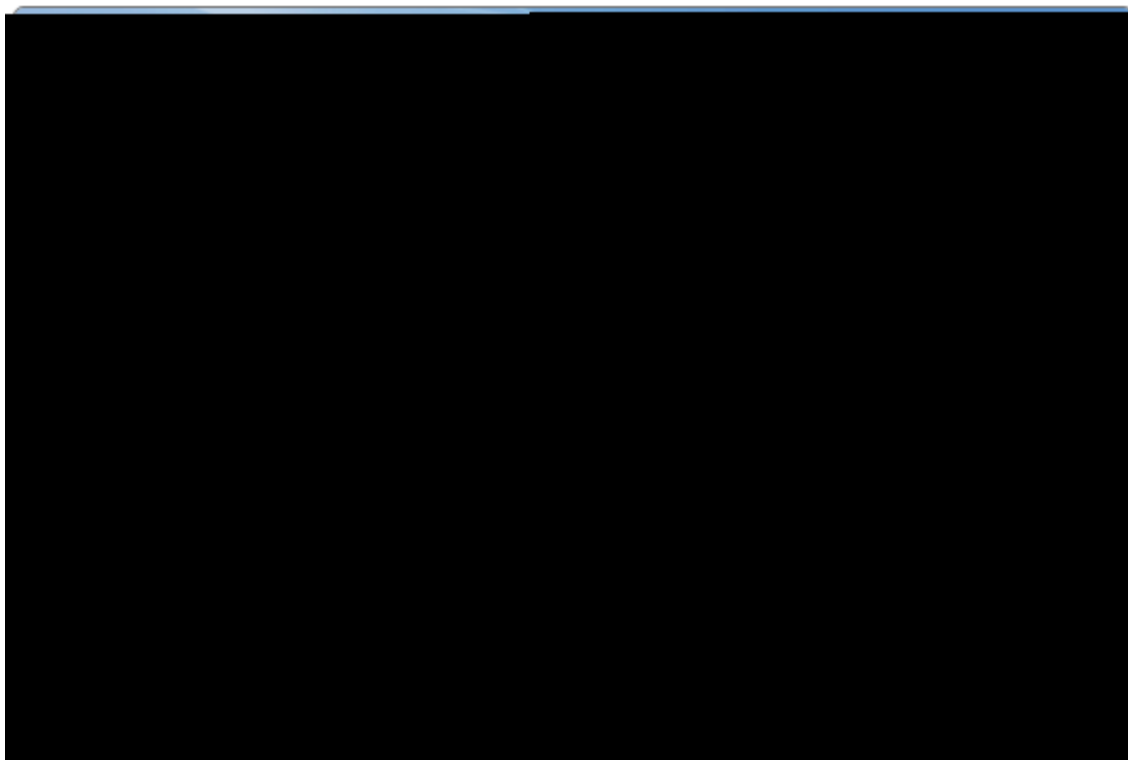


5-10 WAN

WAN

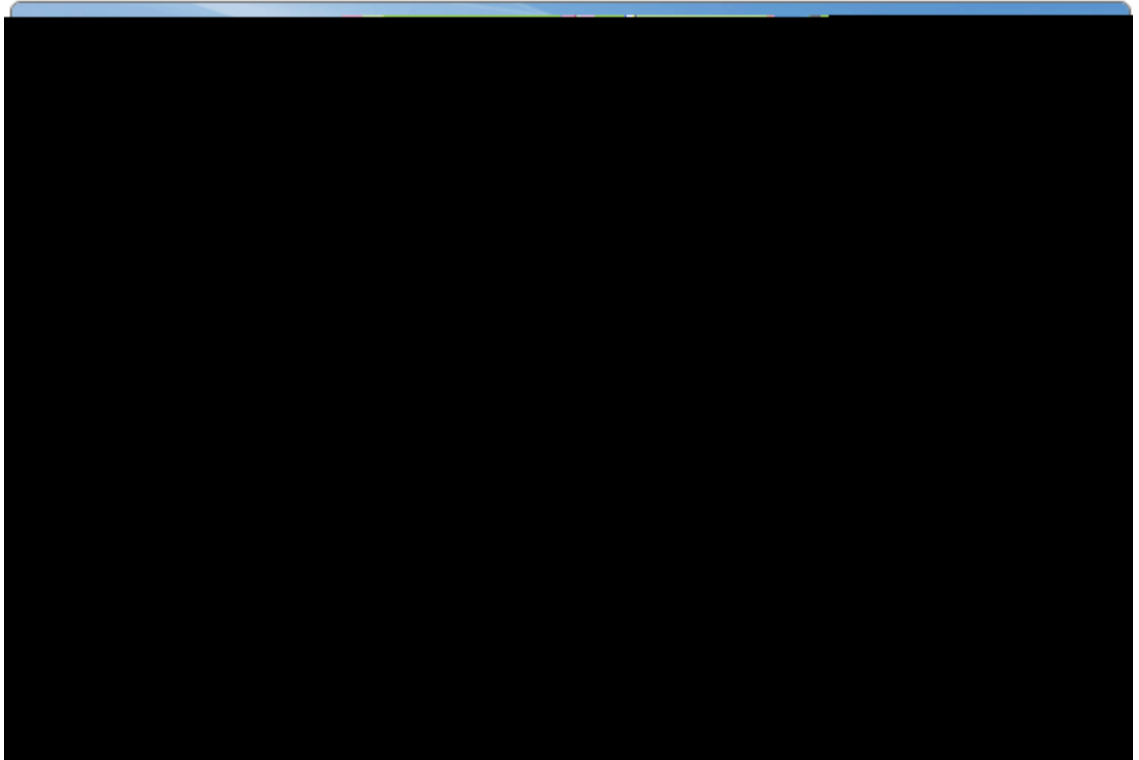
" "

WAN



5-11

" "



5-12

LAN IP

IP

Web

6. NBR

NBR

NBR

NBR



6-2 LAN

- i. NBR
- ii. IN NBR LAN NBR OUT
- iii.
- iv.
- v. NBR NBR

6.2.2

RJ45