



NPE RG-NPE40 RG-NPE60

NPE

0
NPE
NPE

Z
NPE

Z

Z

Z

Z

1
NPE
NPE
NPE
NPE

NPE y

NPE

RG-NPExxx y

NPExxx y

NPE

NPE

$\frac{3}{4}$

<http://www.ruijie.com.cn>

$\frac{3}{4}$

CD-ROM

CD-ROM

CD-ROM

CD-ROM

$\frac{3}{4}$

$\frac{3}{4}$

$\frac{3}{4}$

<http://www.ruijie.com.cn>

$\frac{3}{4}$

service@ruijie.com.cn

$\frac{3}{4}$

+86- 4008-111-000

$\frac{3}{4}$

0591-83057315

$\frac{3}{4}$

$\frac{3}{4}$

$\frac{3}{4}$

1

5

~~Ar~~ O6d

Terminal Display

Terminal Display

Courier New

8.5

2

r

]

		1
1.1	NPE	1
1.1.1	NPE40	1
1.1.2	NPE60	2
1.2	NPE	4
1.2.1		4
1.2.2		4
1.2.3		4
1.2.4		5
1.2.5		5
1.2.6		5
1.2.7		5
		6
2.1		6
2.2		6
2.2.1	/	7
2.2.2		7
2.2.3		8
2.2.4		8
2.2.5		8
2.3		8
		10
3.1		10
3.2		10
3.2.1		11
3.2.2		11
3.3		11
3.4		11
3.5		12
		13
4.1		13
4.1.1		13
4.1.2		15
4.1.3		16
4.2		17
		18
5.1		18
5.2		18

NPE

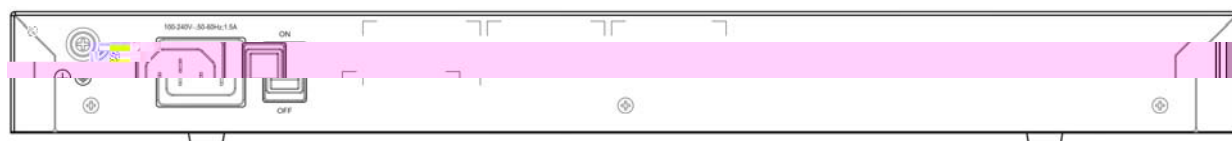
1.1 NPE

1.1.1 NPE40

1.1.1.1 NPE40

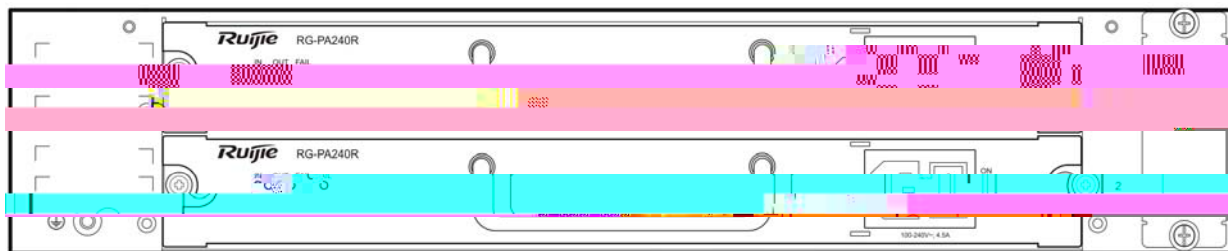


1-1 NPE40



1-2 NPE40

		10Base-T/100Base-TX/1000Base-TX, 1000BASE-SX/LX/ZX
		RS-232
(W × H × D)		440mm × 43.6mm × 400mm



1-4 NPE60

1.1.2.2 NPE60

NPE60

	DDR2 SDRAM 2GB
	BOOTROM 2MB
	FLASH 512MB
I/O	WAN 4 LAN 4 LAN/WAN
	100M
	1
	10Base-T/100Base-TX/1000Base-TX, 1000BASE-SX/LX/ZX 10G BASE-SX/LX
	RS-232
(W × H× D)	440mm× 81mm× 420mm
	100-240V~;50-60Hz
	100W
	0~50
	10~90%RH

1.1.2.3 NPE60

Status	
0 7	LED

	Link ACT 10/100M Link 10/100M ACT
0F 7F	LED Link ACT Link
0SFP+ 1SFP+	LED Link ACT Link

1.2 NPE

1.2.1

```

NPE
z          RJ45          ARP
z          TCP/IP      IP ICMP IGMP TCP  UDP
z          IP          RIP(V1/V2) OSPF
z          SNMP
z          TELNET
z          DHCP
z          PPPoE
z          X-MODEM
z          NAT
z
z          VRRP
z          L2TP PPTP
z          TFTP
    
```

1.2.2

```

z
z
z          web          CLI
    
```

1.2.3

```

z          DEBUG
    
```

- z
- z
- z Console
- z TELNET
- z TFTP

1.2.4

- z IP
- z PPP PAP CHAP
- z MAC
- z NAT

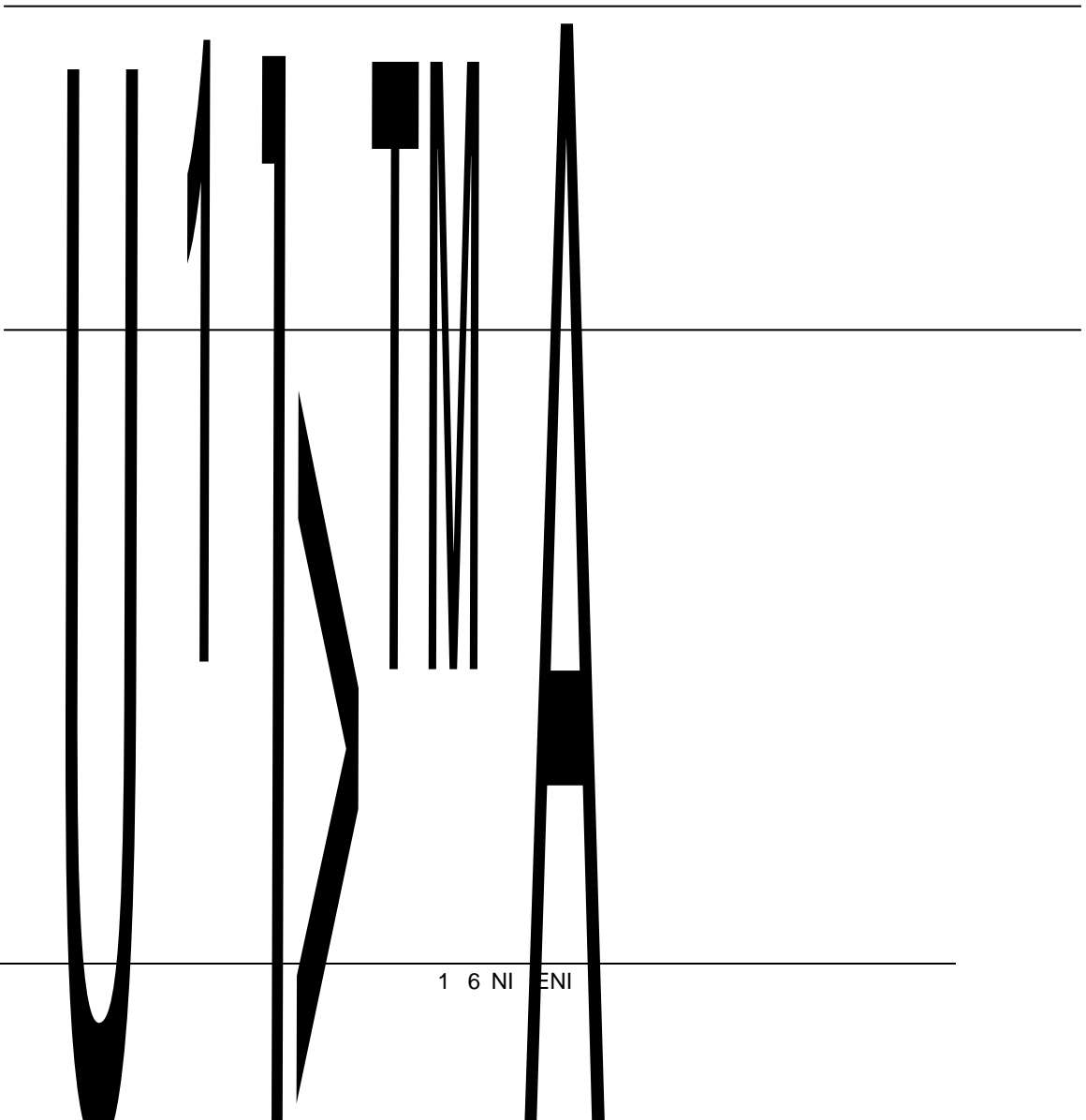
1.2.5

- z DPI P2P IM
- z 600
- z / IP
- z Session

2.7 $\mathcal{J} >^{TM}) f W \zeta U''$

||

||



2.2.1 /

" "

15 ~30	0 ~45	40%~65%	10%~90%

↓

1.5m 0.4m

48 15 5

2.2.2

(μ m)	0.5	1	3	5
()	1.4×10^7	7×10^5	2.4×10^5	1.3×10^5

SO2 H2S NO2 NH3 Cl2

	mg/m3	mg/m3
SO2	0.2	1.5
H2S	0	0.03
NO2	0.04	0.15
NH3	0.05	0.15

Cl2	0.01	0.3
-----	------	-----

2.2.3

Z
Z

Z
Z
Z

Z
Z
Z

2.2.4

Z
Z
Z
Z

2.2.5

Z

19"

Z
Z
Z

2.3

Z

Z

Z

Z

Z

Z

Z

Z

Z

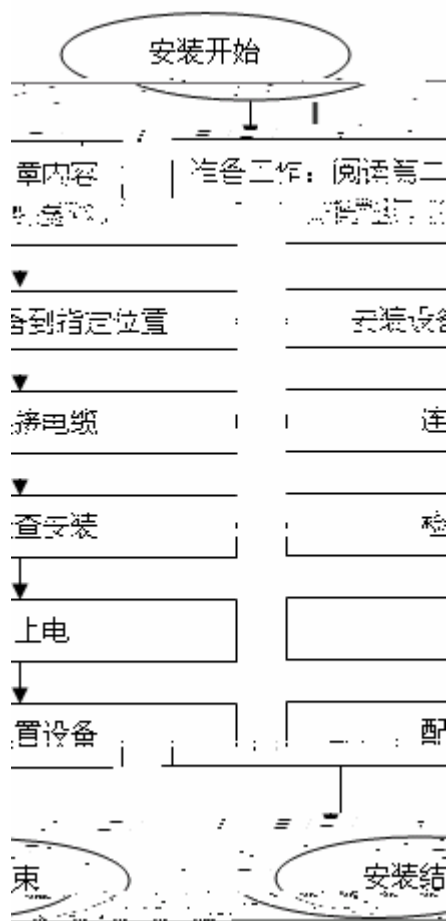
Z HUB

Z

PC

Z

3.1



3.2

Z
Z

3.2.1

3.2.2

z

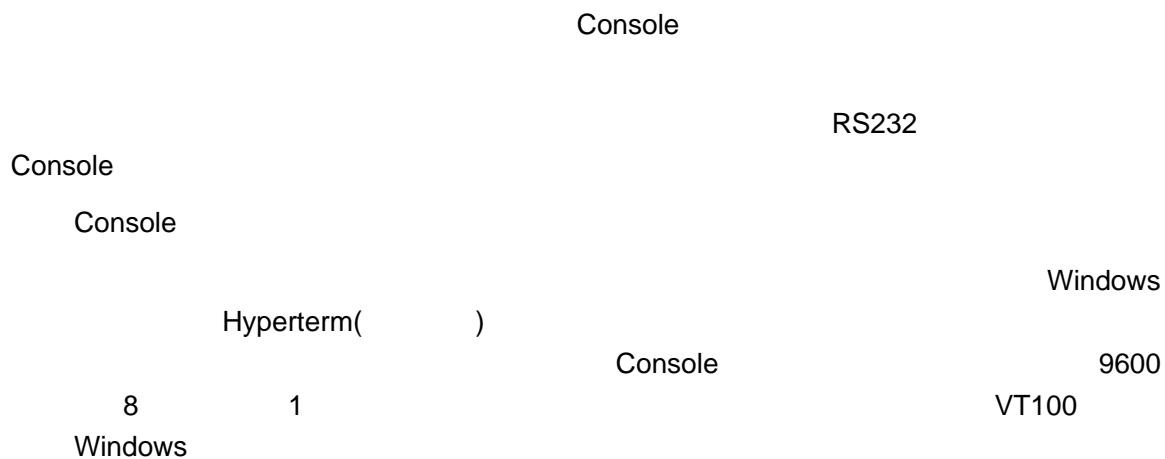
z

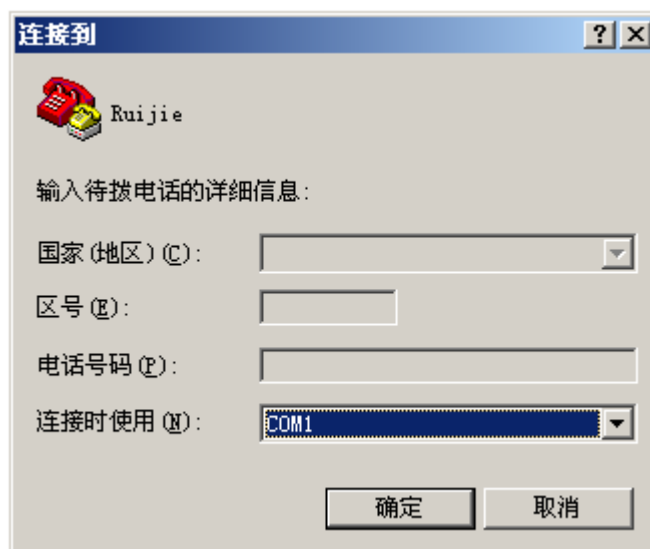
z

10cm

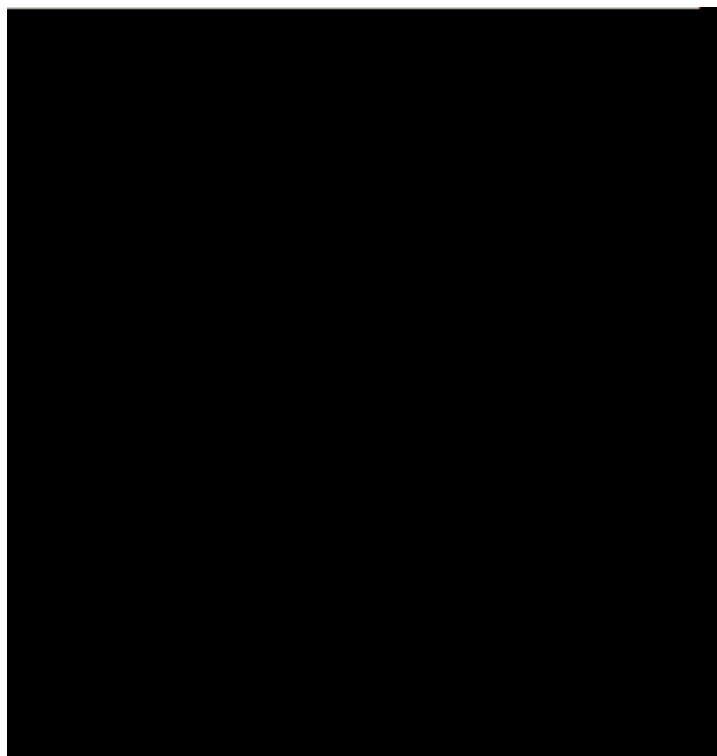
4.1

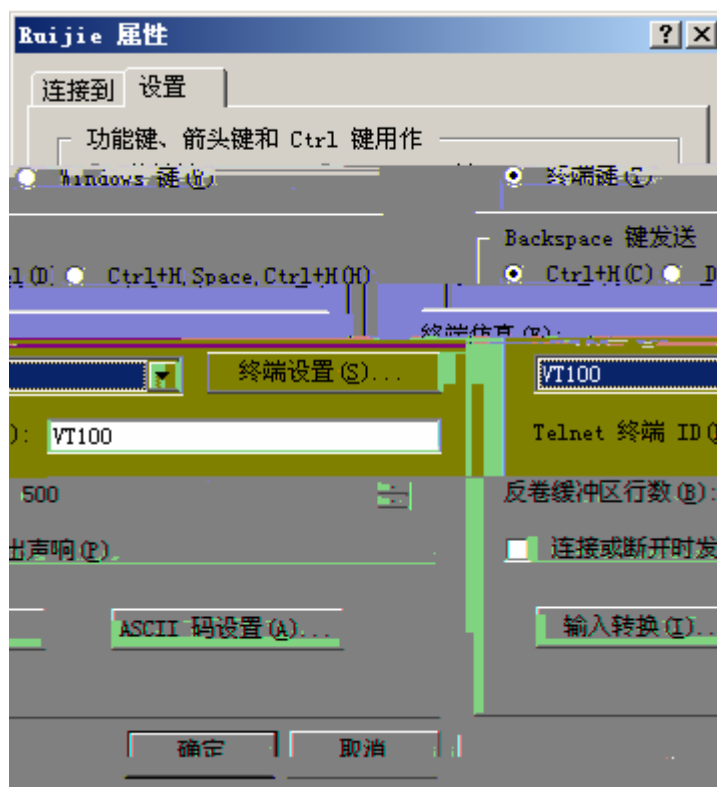
4.1.1





Console





4.1.2

4.1.2.1

Z

Z

r A!
B(B*
hb((Wd

4.1.2.2

Z

Z

" ON"

4.1.2.3

Z

,

“ ”

Z

4.1.3

NPE40

System bootstrap ...

Boot Version: RGOS 10.3(4b7), Release(78528)

Nor Flash ID: 0x00010049, SIZE: 2097152Bytes

MTD_DRIVER-5-MTD_NAND_FOUND: 1 NAND chips(chip size : 536870912) detected

Press Ctrl+C to enter Boot Menu

Main Program File Name rgos.bin, Load Main Program ...

Executing program, launch at: 0x00010000

Ruijie General Operating System Software

Release Software (tm), RGOS 10.3(4b7), Release(78528), Compiled Thu Mar 4 19:35:43 CST

2010 by ngcf35

Copyright (c) 1998-2010s by Ruijie Networks.

All Rights Reserved.

Decompiling or Reverse Engineering is Not Allowed.

*Jan 1 00:00:29: %MTD_DRIVER-5-MTD_NAND_FOUND: 1 NAND chips(chip size : 536870912) detected

*Jan 1 00:00:48: %LINK-3-UPDOWN: Interface GigabitEthernet 0/2, changed state to up.

*Jan 1 00:00:48: %LINEPROTO-5-UPDOWN: Line protocol on Interface GigabitEthernet 0/2, changed state to up.

*Jan 1 00:00:49: %LINK-3-UPDOWN: Interface GigabitEthernet 0/3, changed state to up.

*Jan 1 00:00:49: %LINEPROTO-5-UPDOWN: Line protocol on Interface GigabitEthernet 0/3, changed state to up.

*Jan 1 00:00:50: %LINK-3-UPDOWN: Interface GigabitEthernet 0/1, changed state to up.

*Jan 1 00:00:50: %LINEPROTO-5-UPDOWN: Line protocol on Interface GigabitEthernet 0/1, changed state to up.

*Jan 1 00:00:51: %LINK-3-UPDOWN: Interface GigabitEthernet 0/0, changed state to up.

5.1

NPE40	NPE60	PWR	Status
Z			
Z			
Z			
Z			

r A!			
(W"•		PWR gâ	Status μ
gT Sd			

5.2

Z				
Z				

8	1	VT100	9600
---	---	-------	------

!			
"•			
